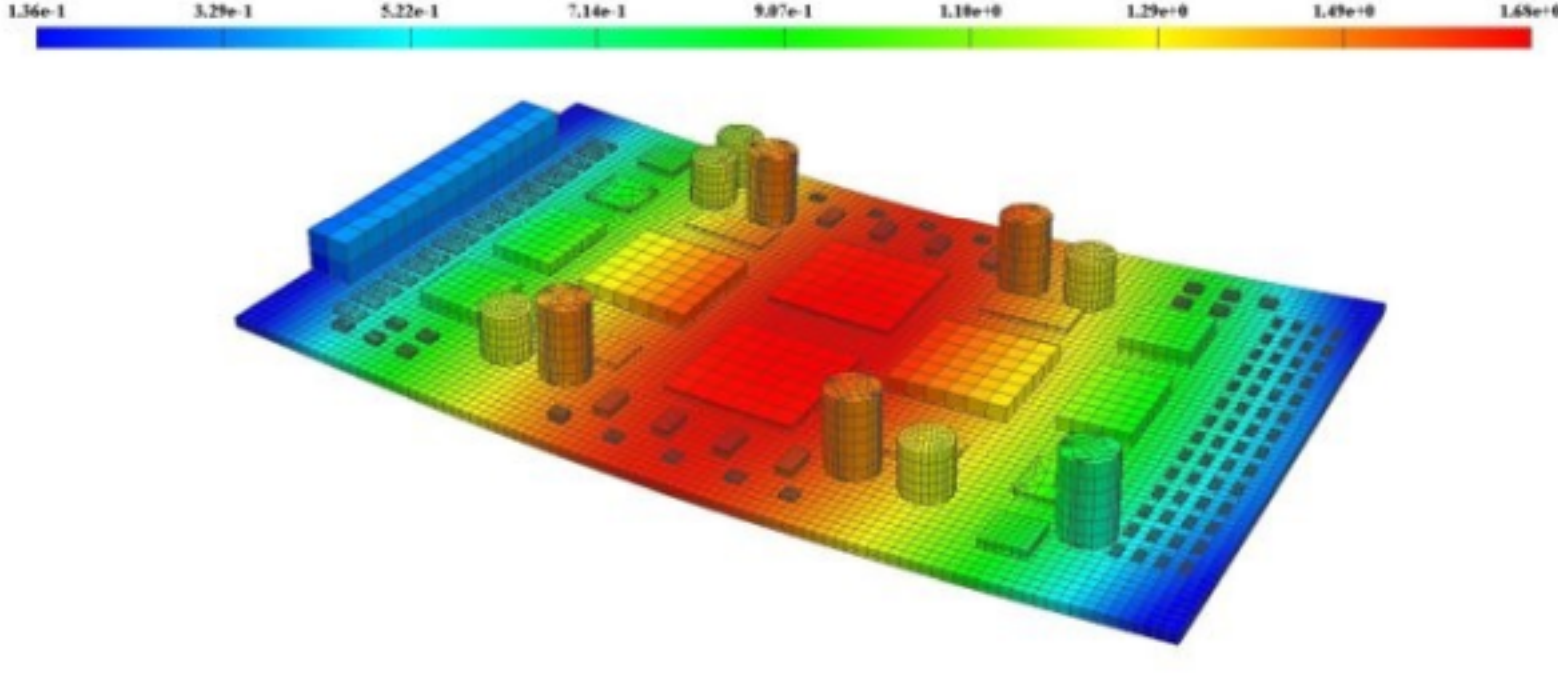


Ansys 2021 R2: Ansys Sherlock and Electronics Reliability Update

August 24, 10:00 AM PDT



About this Webinar

This webinar spotlights major updates to Ansys Electronics Reliability solutions in 2021 R2. Ansys Electronics Reliability solutions feature comprehensive workflows involving Ansys Sherlock, Ansys Mechanical, Ansys Icepak, Ansys LS-DYNA and more. We will cover product integrations, relevant updates for each tool that will enable faster and more efficient simulations and updates to key workflows that help users address important electronics reliability challenges.

What you will learn

- Explore Sherlock updates, including Ansys Workbench integration expansion, harmonic vibration and thermal-mech enhancements and the first official release of the Sherlock Theory Guides.
- Learn about Ansys LS-DYNA integrations with Sherlock that will enable rapid model creation for drop-test analysis.
- Understand Mechanical updates, including expanded reinforcement element and trace mapping capabilities.
- Get insights on key Ansys AEDT and Icepak updates.

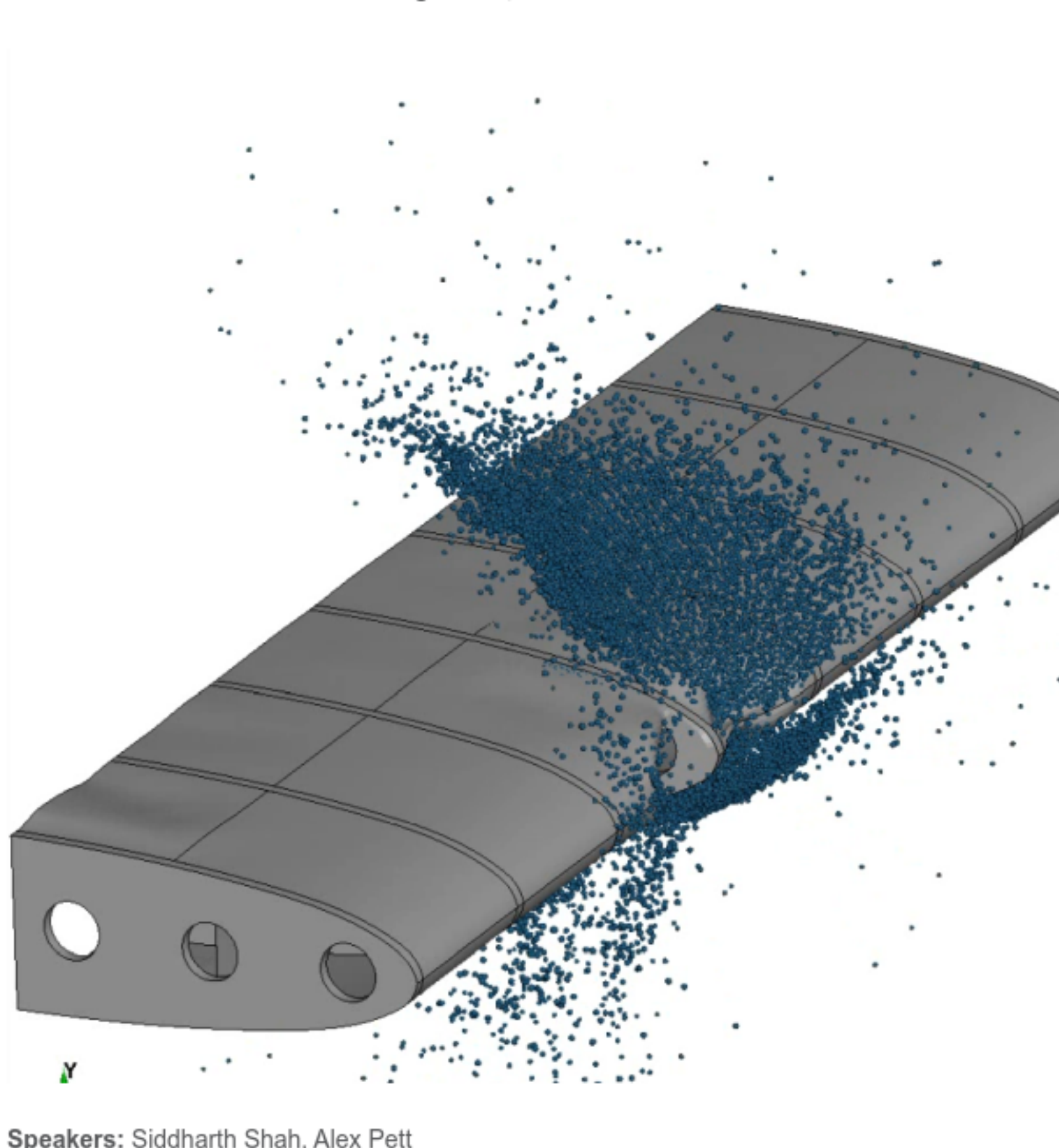
Who should attend

Mechanical, electrical, thermal, mechanical & design engineers. Current and new Ansys customers.

[Register](#)

Ansys 2021 R2: What's New in Ansys LS-DYNA

August 31, 8:00 AM PDT



Speakers: Siddharth Shah, Alex Pett

Ansys 2021 R2 release, LS-DYNA offers enhanced intelligent and advanced implicit and explicit solvers, improved workflows and more. In this What's New webinar you will learn:

- Ansys LS-DYNA 2021 R2 release empowers users to run large jobs and overcome hardware capacity limitations with high-performance computing ARM and Ansys Cloud support for Ansys LS-DYNA.
- Ansys LS-DYNA continues to develop new capabilities to the solver as well as continues integration into mechanical. Mechanical integration updates include new LS-DYNA technology support – Smooth Particle Hydrodynamics (SPH), Arbitrary Lagrangian Eulerian (ALE) and implicit – explicit solutions that enable workflows like pre-stress loading and restarts for drop-test simulations.
- LS-DYNA solver continues to add exciting new features in many areas like Iso-geometric Analysis (IGA), advanced materials, Smooth Particle Galerkin (SPG), and complex multi-physics which can be used for battery-abuse modeling, electro-physiology, and many more areas.

[Register](#)

Ansys 2021 R2 is available for download on the [Ansys Customer Portal](#).

If you need assistance with downloading or installing Ansys 2021 R2, please contact us at (408) 732-4665 or support@ozeninc.com.

Learn more about Ansys 2021 R2 by joining one or more of the [upcoming webinars](#).

Did you know?

A bit of trivia to hopefully enlighten your day and amaze your family and fellow engineers.

Did you know:

- the word engineer comes from a Latin word meaning 'cleverness'.
- the fastest passenger train in the world is the Shanghai Maglev with a maximum operational speed of 267 mph.
- the largest wind turbine in the world is in Denmark. It is 720 feet tall, has 260-foot blades, and can generate 8 megawatts of power (enough to supply electricity for 3,000 American homes).
- the first computer program was predicted by Ada Lovelace in a paper she published in 1843. Ada suggested that plan for calculating Bernoulli numbers with a new calculating engine called the "Analytical Engine".
- one Google search produces about 0.2 g of CO₂. But since you hardly get an answer from one search, a typical search session produces about the same amount of CO₂ as does boiling a tea kettle. Google handles about 1 billion search queries per day, releasing some 200 tons of CO₂ per day..

Upcoming Ansys Webinars

You can also view all of the upcoming webinars by visiting our [Training Calendar](#).

[Ansys 2021 R2: Ansys Discovery Update](#)

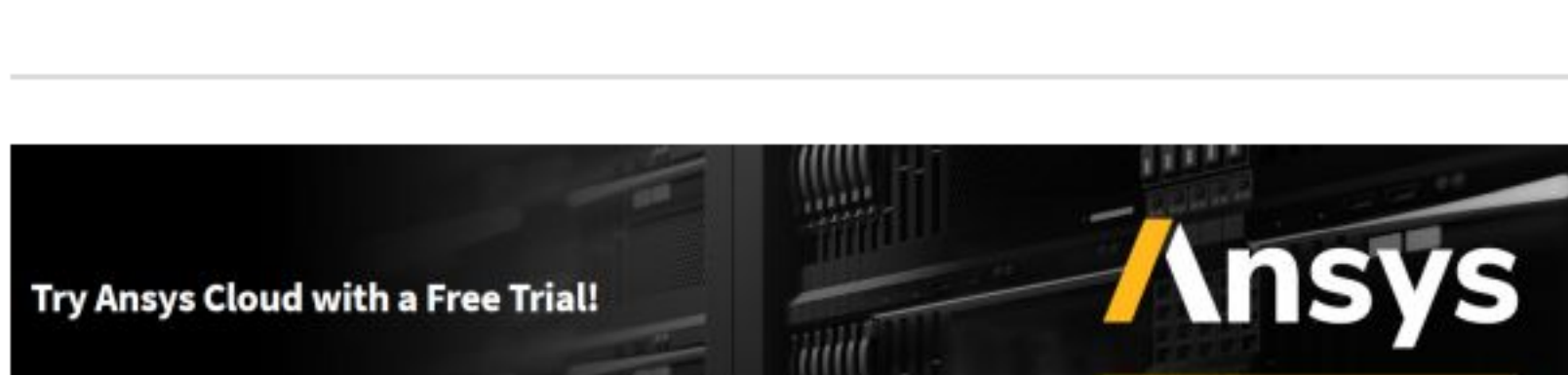
August 25, 2021 - 8:00 AM PDT

This webinar showcases how Ansys Discovery's updates in Ansys 2021 R2 expand simulation capabilities and ease of use for every engineer to unlock innovation and increase productivity throughout the product development process.

[Longboard Design with Ansys Mechanical and Granta EduPack](#)

September 1, 2021 - 8:00 AM PDT

In this webinar we will showcase how to bring together key concepts in optimal materials selection and optimal design using Ansys Mechanical and Ansys Granta EduPack.



Address	Sales	Support
Ozen Engineering, Inc 1210 E Arques Ave #207 Sunnyvale, CA 94085	P: (408) 732-4665 E: sales@ozeninc.com	P: (408) 732-4665 E: support@ozeninc.com